

SR2000 REWINDER SERIES

DE IULIIS CARLO & ALFONSO SPA

VIA XXV LUGLIO 116 - 84013 CAVA DE' TIRRENI, (SA) ITALY

PHONE: +39-089 463844

EMAIL: U.COMMERCIALE@DEIULIIS.IT

WEBSITE: WWW.DEIULIIS.IT



DE IULIIS C.&A.
PAPER MACHINERY

The SR2000 series, with a simple design and sturdy construction, has been created to meet high productivity requirements of papermakers for packaging papers. However, the changes introduced over the years have made it attractive for other types of products as well.

- Specific model design from light paper to cardboard
- Finished roll up to 2,000 mm in diameter,
- Parent Roll up to 3,000 mm in diameter
- Fits both DC or AC motors indifferently, according to customer needs.

Main Sr2000 units:

Unwinding unit:

- Paper constant tension
- Transversal and longitudinal control and oscillating system allows to remove parent roll defects during winding in real time.
- Regenerative motor reduce electrical consumption

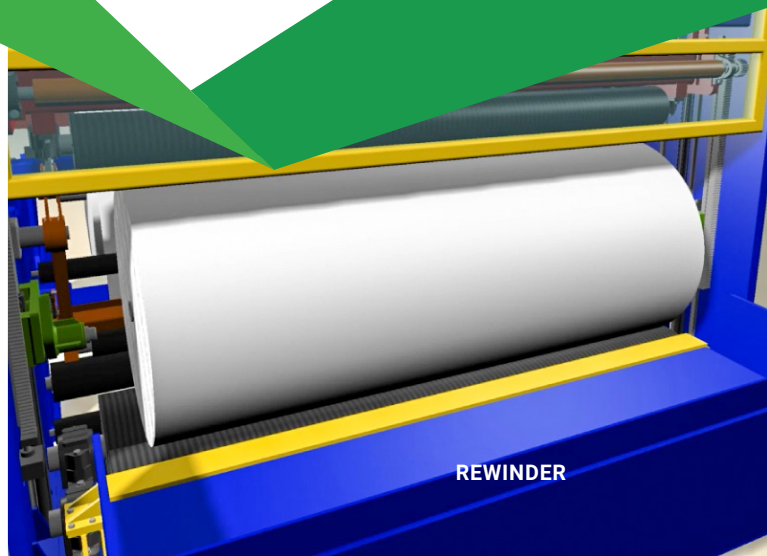
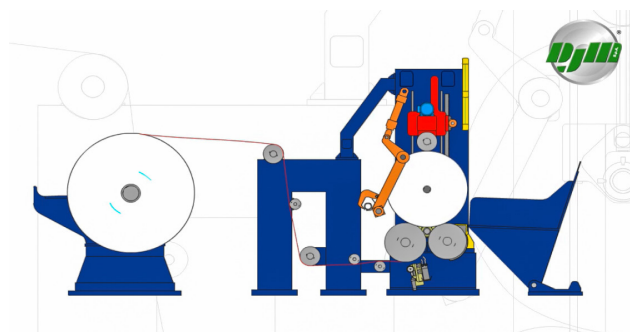
Slitting unit:

- Perfect edge cut of finished roll
- Easy finished rolls separation after winding
- Low dust
- Automatic or manual positioning
- Web-in or web-out type.

The **automatic slitting** unit with web-in system allows :

Maximum paper width accuracy

- Easy and fast cutting measurement by control panel
- Slitting positioning visualization by control panel
- Paper width change without paper breaks
- Strong time reduction of downtime for paper width change



**Winding unit:**

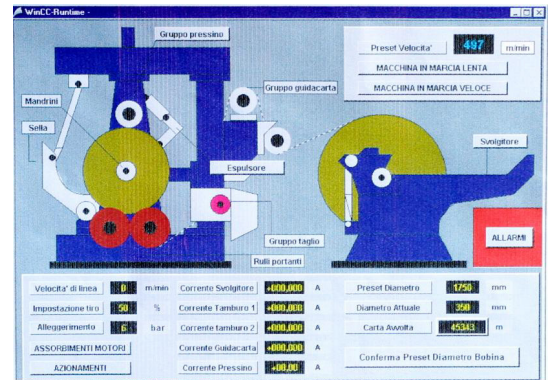
- Rider roll pressure control.
- Core chucks precise positioning and lifting control.
- Automatic torque control between front and rear drum rolls.
- High quality of finished roll winding

Control Unit

- RECIPE GENERATION / MANAGEMENT PAGE
- MAINTENANCE PAGES
- WORKING CURVES DISPLAY PAGE
- CURVE PAGE KNIGHT
- PRODUCTION REPORT MANAGEMENT PAGE

Sensors

Paper "tension" control
Speed control
Torque control
Checking the diameter of the finished rolls
Control of the parent reel diameter
Rewound meters control
Paper break control
Emergency stop control
Position check of the corechuck F. S.



Interconnection 4.0

The machine can be fully integrated with remote management systems, allowing the transmission of operating parameters both in local management systems inside the plant, and externally viewable via cloud systems.

Security

The design of the machine was carried out taking into consideration all the European standards that regulate these applications: UNI EN ISO 12100:2010 - UNI EN ISO 13857:2020 - UNI EN ISO 14119:2013 - UNI EN 1034-1:2010

Main security systems :

- Mesh of photoelectric barriers : a light curtains create a mesh able to reveal the presence of people and objects in the controlled area, stopping the machine if any personnel is in a dangerous area during operation.
- "Hook presence" sensor
- Safe paper introduction system and parent rolls discharge

The machine is fully assembled in the DJM workshops, which can be viewed by the customer before final shipment. All movements and drives are pre-tested in the workshop at this stage.

